

The Return Of The Popular High Performance BM810"s" Series

High Speed, High Accuracy,
High Dollar-value + BeepJack™
High Safety



CE

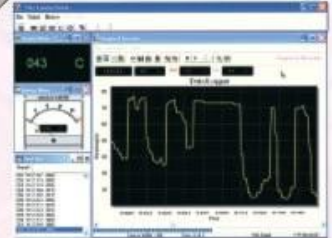
**BM810s Professional
DMM Series**

BRYMEN®

BRIGHT PEOPLE'S CHOICE
<http://www.brymen.com>



BRUA-85Xa Interface Kit
(optional purchase)



● **BM817s** ● **BM815s** ● **BM812s** ● **BM811s**

BM817s	BM815s	BM812s	BM811s	Functions & Features
●	●	●	●	3-4/5 Digits 5,000 Counts For DC/AC Voltage/Current & OHM
●	●			Type-K Temperature -50°C To 1000°C
●		●		AC True RMS 20kHz High Bandwidth Voltage Functions
●	●	●	●	Optically Isolated PC-COMM Interface Capability
●	●	●	●	BRUA-85Xa Interface Kit For Win 98/ME/NT4/2K/XP/Vista/7/10 (Optional Purchase)
●	●	●	●	Audible & Visible BeepJack™ Input Warning Against Improper Plug In
●	●			RECORD Max, Min, Max-Min Readings, Auto-Ranging
●	●			CREST (Peak Hold) Max, Min, Max-Min Readings
●	●	●	●	Back-Lighted Large Easy To Read LCD Display
●	●	●	●	High Speed Analog Bar-Graph Updates 60/Sec
●	●	●	●	Intelligent Auto Power Off (APO)
●	●	●	●	Fast Data Measurement 5/Sec
●	●	●	●	1000V High General Input Protection
●	●	●	●	0.08% High Basic DCV Accuracies
●	●	●	●	Fire Retarded Case
●	●			Relative Zero Mode
●	●	●	●	Data Hold
●	●	●	●	Diode Test
●	●	●	●	DC/AC Current 0.1µA To 10A Continuous (>10A ~ 20A for 30 seconds)
●	●	●	●	DC/AC Voltage 0.01mV To 1000V
●	●	●	●	Ohms 0.01Ω To 50MΩ
●	●	●	●	Capacitance 10pF To 9999µF
●	●	●	●	Fast Audible Continuity < 100µS
●	●	●	●	Line Level FREQUENCY With 4 Trigger Levels
●	●	●	●	High Energy HBC Fuses Protected 1000V
●	●	●	●	Replaceable And Washable Protective Rubber Holster
●	●	●	●	Transient Protection Up To 8kV 1.2/50µS Lightning Surge
●	●	●	●	LVD Meets EN61010-1 CAT III 1000V & CAT IV 600V
●	●	●	●	EMC EN61326-1

Proven Accuracy... Certified Safety... Superb Performance

Swift 60/Sec Bargraph, 20/Sec Data (Record Mode) & PC-Comm capability

FULLY AUTORANGING
SHORTENS THE TIME TO TEST
AND INCREASES THE EASE OF USE

CREST (PEAK HOLD)
CAPTURES INSTANTANEOUS PEAK
READINGS AS SHORT AS 5ms IN DURATION

MAX-MIN RECORD
RECORD MAX, MIN, MAX-MIN
READINGS, AUTORANGING
DATA UPDATES 20/SEC

BACKLIGHTED LCD DISPLAY
FOR EASY VIEWING IN THE DARK

FUNCTION SELECTION
CONVENIENTLY TOGGLE BETWEEN
PRIMARY & SECONDARY FUNCTIONS

RANGE
AUTORANGING WITH MANUAL-
RANGING OVERRIDE

AUDIBLE CONTINUITY
FOR QUICK OPEN-SHORT TESTS
ON SWITCHES, FUSES, AND WIRES

DIODE TEST
FOR CHECKING DIODES AND RECTIFIERS

PLUS 50mV LOW VOLTAGE RANGE
UP TO 0.01mV RESOLUTION

1KV AC VOLTAGE MEASUREMENT
IMPROVED MEASURING CAPABILITIES

HBC FUSE PROTECTED
HIGH BREAKING CAPACITY 1000V
CERAMIC FUSE PROTECTED

BEEP-JACK™ AUDIBLE & VISIBLE WARNING
GUARDS AGAINST IMPROPER A-TERMINAL
PLUG IN. DECREASES RISKS OF DAMAGE

FIRE RETARDED CASE
FOR REINFORCED SAFETY

PROTECTIVE HOLSTER
INCREASES PRODUCT DURABILITY

TRUE RMS
MEASURES TRUE VALUE
REGARDLESS OF WAVEFORMS

PC INTERFACE CAPABILITY
OPTIONAL PURCHASE RS232C+USB CABLES
WITH DATA RECORDING PC SOFTWARE
FOR WIN98/NT4/2K/XP/VISTA

0.08% HIGH BASIC ACCURACY
WITH LARGE EASY TO READ DISPLAY

AUTO POWER OFF (APO)
TO EXTEND BATTERY LIFE

FAST MEASUREMENTS
DATA UPDATES 5 TIMES / SEC

RELATIVE ZERO MODE
FOR CONVENIENT READINGS
COMPARISON & OFFSET

ZOOM ANALOG POINTER
5 TIMES THE RESOLUTION TO
DETECT SMALL SIGNAL TRENDS,
UPDATES 60 TIMES PER SECOND

Hz FUNCTION
FREQUENCY MEASUREMENT

DATA HOLD
FREEZES THE DISPLAYING
READING FOR LATER VIEW

PLUS 50Ω LOW OHM RANGE
UP TO 0.01mΩ RESOLUTION,
AUTO TEST LEADS CALIBRATION

K-TYPE TEMPERATURE
SELECTABLE °C OR °F
MEASUREMENTS

CAPACITANCE
AUTORANGING UP TO 9999μF
WITH 1000V PROTECTION

EMC
MEETS 61326-1:2013

TRANSIENT PROTECTION
UP TO 8kV 1.2/50μS LIGHTNING SURGE,
MORE CONFIDENCE FOR SERIOUS USERS

LVD
MEETS EN61010-1 THIRD EDITION
CAT III 1kV & CAT IV 600V



General Specifications

Display:

3-4/5 digits 5000 counts LCD display

Update Rate:

Digital Data 5 per second nominal;

52 Segments Bar-graph 60 per second nominal

AC Sensing:

True RMS for BM812s & BM817s

Average sensing for BM811s & BM815s

Operating Temperature: 0°C to 45°C

Relative Humidity: Maximum relative humidity 80% for temperature up to 31°C decreasing linearly to 50% relative humidity at 45°C

Storage Temperature: -20°C to 60°C, 80% R.H. (with battery removed)

Pollution degree: 2

Altitude: Operating below 2000m

Temperature Coefficient: nominal 0.15 x (specified accuracy) / °C @ (0°C - 18°C or 28°C - 45°C), or otherwise specified

Overload Protections:

µA & mA : 0.44A/1000V, IR 10kA, F fuse

A : 11A/1000V, IR 20kA, F fuse

V : 1100V DC/AC rms

mV, Ω, & Others: 1000V DC/AC rms

Safety: Double insulation per IEC/UL/EN61010-1 Ed.

3.0, IEC/EN61010-2-030 Ed. 1.0, IEC/EN61010-2-033

Ed. 1.0, IEC/UL/EN61010-031 Ed. 1.1 and

CAN/CSA-C22.2 No. 61010-1-12 Ed. 3.0 to Category

III 1000V AC & DC and Category IV 600V AC & DC

Terminals (to COM) Measurement Category:

V / A / mAµA : Category III 1000V AC & DC & Category

IV 600V AC & DC

Transient protection: 8kV (1.2/50µs surge)

E.M.C.: Meets EN61326-1:2013

In an RF field of 3V/m:

Capacitance function is not specified

Other function ranges:

Total Accuracy = Specified Accuracy + 100 digits

Performance above 3V/m is not specified

Power Supply: Single standard 9V battery NEDA1604,

JIS006P or IEC6F22

Power Consumption: 4.3 mA typical

Low Battery: Below approx. 7V

APO Timing: Idle for 17 minutes

APO Consumption: 50µA typical

Dimension: L186mm X W87mm X H35.5mm; L198mm

X W97mm X H55mm with holster

Weight: 340 gm; 430 gm with holster

Accessories: Test leads (pair); Holster; Battery (installed); User's manual; Bkp60 banana plug K type thermocouple (BM815s & BM817s only)

Optional Accessories: BRUA-85Xa PC Interface kit (BC-85Xa RS232 optical adapter cable + B8151X software CD + BUA-2303 USB-to-Serial adaptor); Bkb32 banana plugs to K-type socket plug adapter (BM815s & BM817s only)

Special Features:

All models:

Data-Hold; Range-Hold; Backlighted Display; Optional PC-Interface capabilities; Audible & visible input warning

BM815s & BM817s only:

50ms Record MAX-MIN readings at fast 20/second measurement mode; 0.8ms Crest (Instantaneous Peak-Hold) MAX-MIN readings; Relative-Zero offset mode; Zoom 5x analog pointer at 60/s

ELECTRICAL SPECIFICATIONS

Accuracy is +/- (% reading digits + number of least significant digits) or otherwise specified, at 23°C +/- 5°C & less than 75% R.H.

True RMS BM812s & BM817s ACV & ACA accuracies are specified from 5% to 100% of range or otherwise specified. Maximum Crest Factor <4.2:1 at full scale & <2.1:1 at half scale, and with frequency spectrums, besides fundamentals, fall within the meter specified AC bandwidth for non-sinusoidal waveforms.

DC Voltage

RANGE	Accuracy
50.00 mV	0.12% + 2d
500.0 mV	0.06% + 2d
5.000V, 50.00V, 500.0V, 1000V	0.08% + 2d

Input Impedance : 10MΩ, 16pF nominal (44pF nominal for 50mV & 500mV ranges)

AC Voltage

RANGE	Accuracy
50Hz - 60Hz	
50.00mV, 500.0mV, 5.000V, 50.00V, 500.0V, 1000V	0.5% + 3d
40Hz - 500Hz	
50.00mV, 500.0mV	0.8% + 3d
5.000V, 50.00V, 500.0V	1.0% + 4d
1000V	1.2% + 4d
Up to 20kHz	
50.00mV, 500.0mV	0.5dB*
5.000V, 50.00V, 500.0V	3dB*
1000V	Unspec'd

*Specified from 30% to 100% of range

Input Impedance : 10MΩ, 16pF nominal (44pF nominal for 50mV & 500mV ranges)

Crest mode for V & A functions (BM815s & BM817s only)

Accuracy: Specified accuracy ±150 digits for changes > 0.8 ms In duration

DC Current

RANGE	Accuracy	Burden Voltage
500.0µA	0.2% + 4d	0.15mV/µA
5000µA		0.15mV/µA
50.00mA		3.3mV/mA
500.0mA		3.3mV/mA
5.000A		45mV/A
10.00A*		45mV/A

*10A continuous, >10A 20A for 30 second max with 5 minutes cool down interval

AC Current

RANGE	Accuracy	Burden Voltage
50Hz - 60Hz		
500.0µA	0.6% + 3d	0.15mV/µA
5000µA		0.15mV/µA
50.00mA		3.3mV/mA
500.0mA	1.0% + 3d	3.3mV/mA
5.000A	0.6% + 3d	45mV/A
10.00A*		45mV/A
40Hz - 1kHz		
500.0µA	0.8% + 4d	0.15mV/µA
5000µA	0.8% + 4d	0.15mV/µA
50.00mA	0.8% + 4d	3.3mV/mA
500.0mA	1.0% + 4d	3.3mV/mA
5.000A	0.8% + 4d	45mV/A
10.00A*	0.8% + 4d	45mV/A

*10A continuous, >10A to 20A for 30 second max with 5 minutes cool down interval

Ohms

RANGE	Accuracy
50.00Ω	0.3% + 6d
500.0Ω	0.1% + 3d
5.000kΩ, 50.00kΩ, 500.0kΩ	0.1% + 2d
5.000MΩ	0.4% + 3d
50.00MΩ	2.0% + 5d

Open Circuit Voltage : < 1.3VDC (< 3VDC for 50Ω & 500Ω ranges)

Audible Continuity Tester

Audible threshold : between 20Ω and 200Ω. Fast response time < 100µs

Temperature (BM815s & BM817s only)

RANGE	Accuracy*
-50 °C TO 1000 °C	0.3% + 3d
-58 °F TO 1832 °F	0.3% + 5d

*Thermocouple range & accuracy not included

Accuracies assume meter interior and the ambient have reached the same temperature (isothermal stage) for a correct junction voltage compensation. Allow enough settling time for a significant change of ambient

temperature. It can take up to an hour for changes > 5°C.

Diode Tester

Range	Accuracy	Test Current (Typical)	Open Circuit Voltage
2.000V	1% + 1d	0.4mA	< 3.5 VDC

Frequency

Function	Sensitivity (Sine RMS)	Range
mV	300mV	10Hz - 125kHz
5V	2V	10Hz - 125kHz
50V	20V	10Hz - 20kHz
500V	80V	10Hz - 1kHz
1000V	300V	10Hz - 1kHz
Ω, Cx, diode	300mV	10Hz - 125kHz
µA, mA, A	10% F.S.	10Hz - 125kHz

Accuracy: 0.01% + 2d

Capacitance

RANGE	Accuracy*
50.00nF	0.8% + 3d
500.0nF	0.8% + 3d
5.000µF	1.5% + 3d
50.00µF	2.5% + 3d
500.0µF**	3.5% + 5d
9999µF**	5.0% + 5d

*Accuracies with film capacitor or better

**In manual-ranging mode, measurements not specified below 45.0µF and 450µF for 500.0µF and 9999µF ranges respectively



洛克儀器股份有限公司 Lock Instrument Co. Ltd

[台北] 新北市中和區中正路764號6樓
TEL: (02) 3234-6000 FAX: (02) 2223-1199
[新竹] 新竹市北區光華二街72巷79號
TEL: (03) 532-4199 FAX: (03) 534-1091